

Wireless Module TC35i

Concentrated on the core of GSM



The TC35i is a GSM module with basic connectivity enabling voice and fax communication as well as applications with a low data transfer volume. It is extremely compact in size and economical in power consumption.

The small size and flexible integration of the wireless module make it relatively easy to incorporate in M2M applications intended for deployment in business fields as varied as metering, remote maintenance, transportation and logistics, traffic systems, vending machines, security, healthcare, and facility management. Being purely designed for GSM communications, the TC35i is especially suitable for use in payphones and desktop phones.

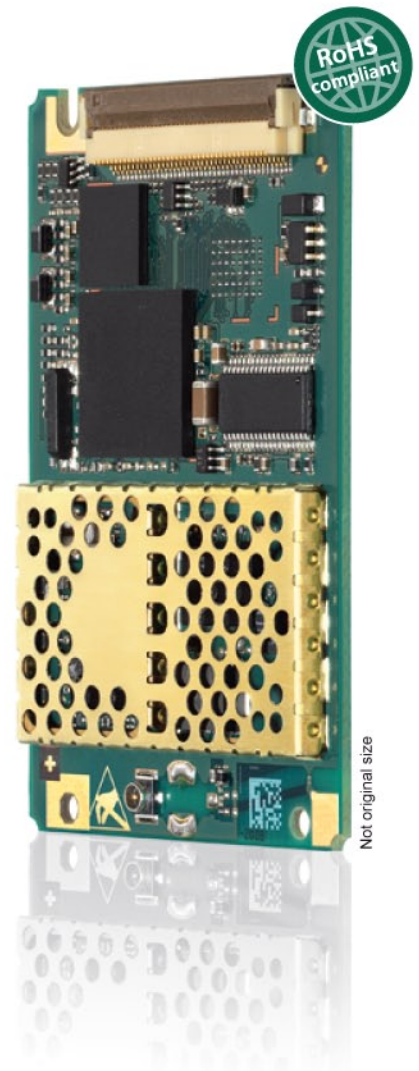
The TC35i comes with full type approval (FTA), which saves cost for certification and cuts down the time to market for your new product considerably.



Dual-Band

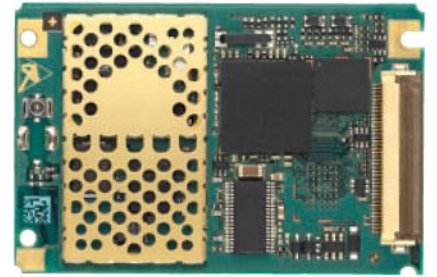


FAX Functionality



Wireless Module TC35i

Concentrated on the core of GSM



Original size

General features:

- Dual-Band GSM 900/1800 MHz
- Compliant to GSM phase 2/2+
- Output power:
 - Class 4 (2 W) for EGSM900
 - Class 1 (1 W) for GSM1800
- Control via AT commands
- SIM Application Toolkit
- Supply voltage range: 3.3 ... 4.8V
- Power consumption:
 - Power down 50 μ A
 - Sleep mode 3.5 mA
 - Speech mode (average) 300 mA
- Temperature range
 - Normal Operation: -20°C to +70°C
 - Restricted Operation: -25°C to +75°C
 - Switch off: +80°C
 - Storage: -40°C to +85°C
- Dimensions: 36 x 54.5 x 3.6 mm
- Weight: 9 g

Specification for CSD data transmission:

- Up to 14.4 kbps
- V.110
- Non-transparent mode
- USSD support

Specification for SMS:

- Point-to-point MO and MT
- SMS cell broadcast
- Text and PDU mode

Specification for fax:

- Group 3, class 1, 2

Specification for voice:

- Triple-rate codec for HR, FR and EFR
- Basic hands-free operation
- Echo cancellation
- Noise reduction

Special features:

- 7E1-character framing

Interfaces:

- 50 Ω GSC RF connector
- 40-pin ZIF connector:
 - Power supply
 - Audio: 2x analog
 - SIM card interface 3 V
 - Serial interface (ITU-T V.24 protocol)

Approvals:

- R&TTE, GCF, CE
- Local approvals and network operator certifications

*Global thinking,
local understanding.*



U.K. ← Football → USA

Here, there and everywhere

Global but local – Cinterion lives up to this motto! Not only are we present locally but we are also able to open up amazing global business perspectives for you! Find the details of your local Cinterion contact partner here: www.cinterion.com

Technical Support

Our application engineers support you from the design-in phase over the integration of the module into the application to the certification process.

We protect your business

Profit from our strong Intellectual Property Rights position (IPR) – guarded by our legal professionalism you secure the fruits of your business effort.

Our technology portfolio covers → +++ Java™ Open Platform +++ EDGE +++ GPS +++ HSDPA +++